

ANNUAL SNJDC
CONSTRUCTION FORECAST
ECONOMIC RECOVERY AHEAD

PRESENTED BY



America's Most Convenient Bank®

Welcome To Construction Forecast!



HEALTH & WELLNESS POSTERS



PROTECT YOUR WORKPLACE

ARC®

Health & Wellness Essentials to Keep
Teams and Visitors Safe

Gerry Burns, Senior Regional VP

Mobile: 215.768.4867

Gburns@e-arc.com



camden county

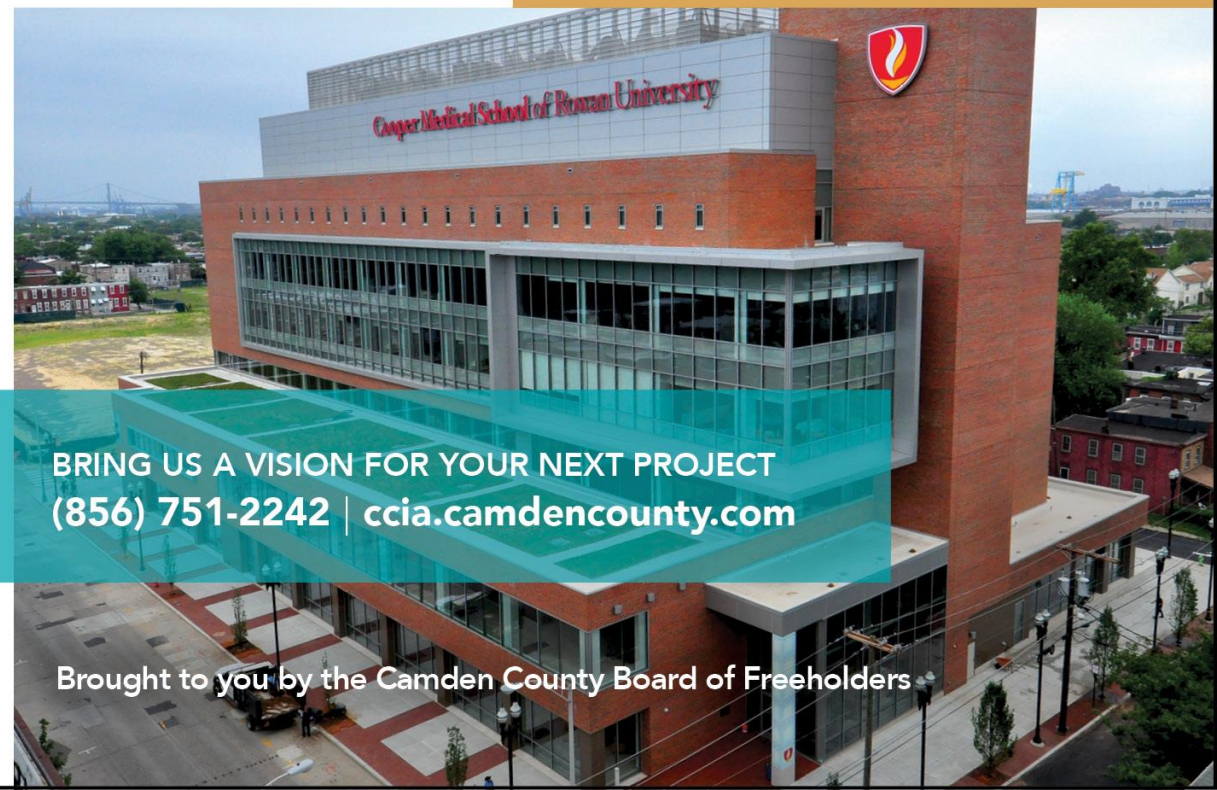
IMPROVEMENT AUTHORITY

Making It Better. Together.

our team
is ready
for yours



- PROJECT MANAGEMENT
- STRATEGIC FINANCING
- HOUSING & COMMUNITY DEVELOPMENT
- PROPERTY REGISTRATION PROGRAM



BRING US A VISION FOR YOUR NEXT PROJECT
(856) 751-2242 | ccia.camdencounty.com

Brought to you by the Camden County Board of Freeholders



215.322.8400

WWW.CM3INC.COM



INDOOR AIR QUALITY



FACILITY MODERNIZATION

CRISIS MANAGEMENT



SYSTEMS INTEGRATION





Advancing Our Client's Vision. **Improving Our World.**



www.FPAengineers.com





ADVISORS FOR THE BUILT ENVIRONMENT

**PROGRAM, PROJECT &
CONSTRUCTION MANAGEMENT**

CONSTRUCTION CLAIMS CONSULTING

COMMISSIONING SERVICES

WWW.GREYHAWK.COM



Engineering | Design | Planning | Construction Management

Providing Engineering and Construction Services to Southern New Jersey for over 30 years.

www.gpinet.com

908.236.9001

NJ Offices:

Lebanon, Ocean View, Red Bank





HUTCHINSON™

Expertly better.

FOR BUSINESS



Ask Us About Our **“3-Step Return to the Office”**
and How to Save up to 80%

Upgrade to energy efficiency with Direct Install from
New Jersey's Clean Energy Program™ and up to

80% of the
cost
will be
covered.



Direct Install is brought to you by the
New Jersey Board of Public Utilities.

888-777-4501 • HUTCHBIZ.com

William A. Hutchinson Jr, Master Plumber Lic. #5041. Edward P. Hutchinson, Master HVACR Contractor Lic. #22700. Hutchinson HIC Reg. #13VH01747500.



JKRP
ARCHITECTS

www.jkrparchitects.com

Transforming the Built Environment

LAN ASSOCIATES



Architecture, Engineering, Surveying
Midland Park, NJ | Goshen, NY | Voorhees, NJ | Bethlehem, PA
www.lanassociates.com 201.447.6400



PARKER McCAY

COUNSEL WHEN IT MATTERS.™



Deep Industry Knowledge



Diverse Experience



Effective Solutions

A Leader in Construction Law

Ashley H. Buono
Construction Law Group
856-985-4057
abuono@parkermccay.com

www.ParkerMcCay.com



**UNBEATABLE IT &
CYBER SECURITY SERVICES**

Call to arrange a customized IT consultation

856.754.7500



Channel Futures.
MSP 501
2019 WINNER





See the SMART difference!

We provide the highest quality craftsmen for the Residential, Commercial and Industrial sheet metal construction industry.

SHEET METAL WORKERS' LOCAL UNION 19

Gary Masino: President & Business Manager

Bryan Bush: Assistant Business Manager

(215) 952-1999 x. 2 | www.smartlu19.org





Get to know a banker who gets to know your business.

We take the time to understand what makes your business different, then offer solutions to fit your exact needs. From loans and lines of credit to treasury management, our financial services can help you reach a higher level of success.

Let's start a conversation.
1-888-388-0408 or tdbank.com/commercialbanking



Member FDIC | TD Bank, N.A. | Loans subject to credit approval; terms and conditions may apply.

ANNUAL SNJDC
CONSTRUCTION FORECAST
ECONOMIC RECOVERY AHEAD

PRESENTED BY



America's Most Convenient Bank®

Welcome Remarks

Jane Asselta, Vice President, SNJDC





2020 SNJDC Construction Forecast Planning Committee

Construction Forecast Planning Committee Co Chairs



Dave Calnan
Senior Vice President
French & Parrello Associates



Mike Hutchinson
Commercial Sales
Hutchinson Mechanical Services

ANNUAL SNJDC
CONSTRUCTION FORECAST
ECONOMIC RECOVERY AHEAD

PRESENTED BY



America's Most Convenient Bank®

South Jersey Economic Update

Introduced by Mike Hutchinson, Hutchinson Mechanical



Rob Curley
SJ Market President
TD Bank



ANNUAL SNJDC
CONSTRUCTION FORECAST
ECONOMIC RECOVERY AHEAD

PRESENTED BY



America's Most Convenient Bank®

Atlantic County Resurgence

Introduced by Chaz Caramanna, GREYHAWK



Lauren Moore

Executive Director

Atlantic County Economic Alliance



Business Retention ♦ Business Growth ♦ Business
Attraction

Atlantic County Aviation Innovation Hub



Lauren H. Moore, Jr.
Executive Director



NEW JERSEY AVIATION INNOVATION HUB

FAA WILLIAM J. HUGHES TECH CENTER



ATLANTIC CITY INTERNATIONAL AIRPORT



NATIONAL AVIATION RESEARCH & TECH PARK



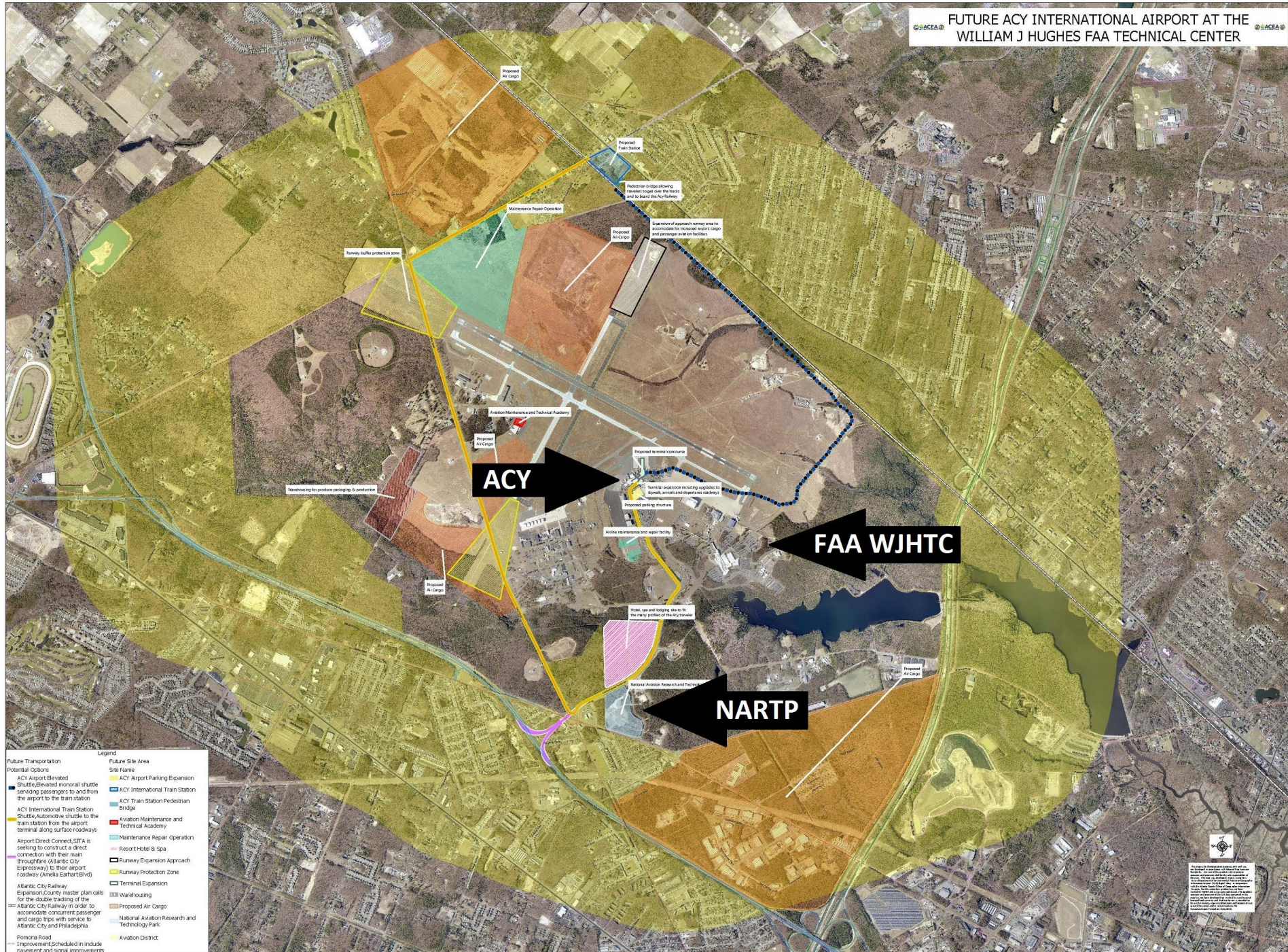
BUILDING AN AVIATION INNOVATION HUB AROUND STRONG EXISTING ASSETS

- Atlantic City International Airport (ACY)
 - Commercial Carrier – Spirit Airlines
 - Military – 177th Fighter Wing
 - U.S. Coast Guard Air Station
 - Air Marshal Training Service
 - Transportation Security Laboratory
- Two runways: 10,000 feet; 6,144 feet
- Underused resource on 5,000 acres operated by the State of NJ
South Jersey Transportation Authority
- Class C Airspace Designation with less congestion at a lower cost than nearby major airports in Philadelphia and Newark
- ACY is home to the FAA Technical Center
 - 5,000 employees, including civilian contractors



Aviation Innovation Hub





- Legend**
- Future Site Area**
- Potential Options**
- ACY Airport Elevated Shuttle/Elevated monorail shuttle serving passengers to and from the airport to the train station
 - ACY International Train Station
 - ACY Train Station Pedestrian Bridge
 - ACY Direct Connect, SITA is seeking to construct a direct connection with their main throughfare (Atlantic City Expressway) to their airport roadway (Amelia Earhart Blvd)
 - Atlantic City Railway Expansion, County master plan calls for the double tracking of the Atlantic City Railway in order to accommodate concurrent passenger and cargo trips with service to Atlantic City and Philadelphia
 - Pomona Road
 - Improvement Scheduled to include pavement and signal improvements
- Legend**
- Future Site Area
 - Site Name
 - ACY Airport Parking Expansion
 - ACY International Train Station
 - ACY Train Station Pedestrian Bridge
 - Aviation Maintenance and Technical Academy
 - Maintenance Repair Operation
 - Resort Hotel & Spa
 - Runway Expansion Approach
 - Runway Protection Zone
 - Terminal Expansion
 - Warehousing
 - Proposed Air Cargo
 - National Aviation Research and Technology Park
 - Aviation District

NOTES:

1. This map is for informational purposes only and does not constitute a contract or offer of any service. The information is subject to change without notice.

2. The information is based on the most current data available at the time of printing. The information is not intended to be used for any purpose other than that for which it was prepared.

3. The information is not intended to be used for any purpose other than that for which it was prepared.

4. The information is not intended to be used for any purpose other than that for which it was prepared.

NATIONAL AVIATION RESEARCH & TECHNOLOGY PARK

- NARTP is a key element of the NJ Aviation Innovation Hub.
- **NARTP is a collaboration of industry, academia and government** dedicated to the advancement of aviation sciences through private and public research and development.
- The first state-of-the-art 66,000 sq. ft. aviation research building opened June 19, 2019 and is fully leased.
- 58-acre site.
- 334,000 sq. ft. of aviation related space is available for further development just outside the FAA Tech Center. Build-to-suit opportunity.

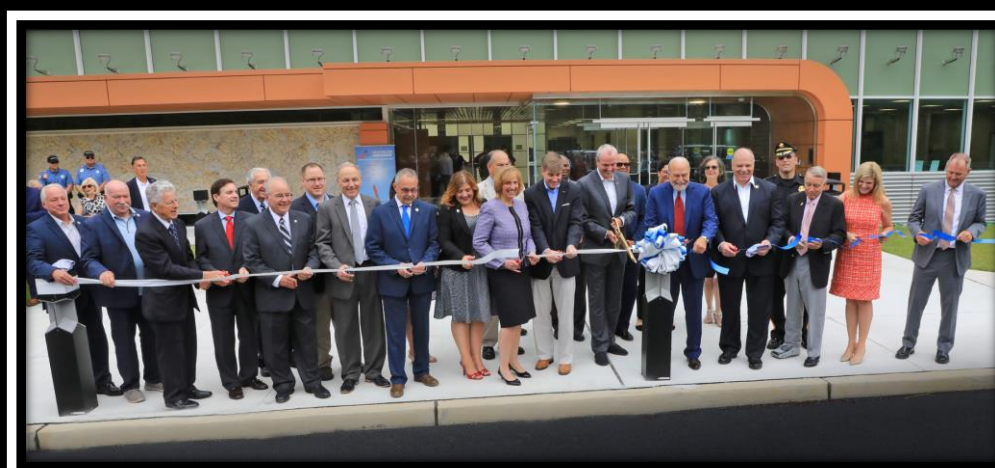




NARTP – FIRST BUILDING



- 300 HIGH-TECH JOBS AT NARTP
- Tenants include:
 1. NARTP
 2. General Dynamics Information Technology (GDIT)
 3. Thunderbolt Software
 4. Atlantic County Institute of Technology (ACIT)
 5. Federal Aviation Administration (FAA)
 6. Rowan University
 7. Concepts Beyond
 8. Optimal Solutions and Technologies (OST)
 9. Diakon Solutions



STRATEGIC PARTNERSHIPS



ACADEMIC PARTNERSHIPS



AIRPORT OF THE FUTURE

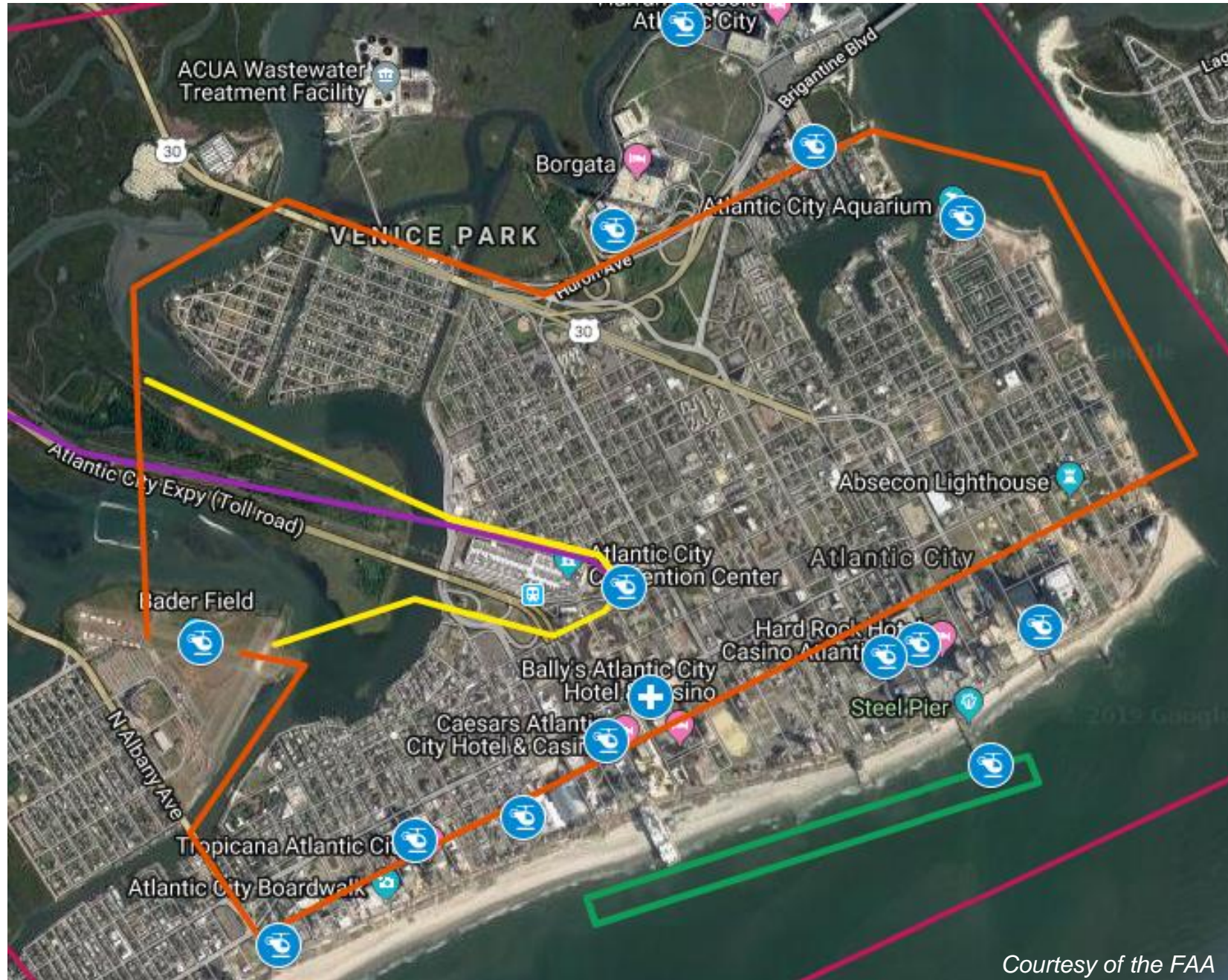


- Newest entity as we build out our Aviation Innovation Hub – **The Smart Airport and Aviation Partnership (SAAP)**.
- ACEA awarded \$1.7 million three-year grant from the U.S. Department of Commerce.
- ACEA Partnered with the National Institute of Aerospace (NIA) to win the grant.
- Southern New Jersey's first Technology Incubator/Accelerator. Attracted first cohort of 7 new companies.

OTHER TECHNOLOGY ADVANCEMENT UNDERWAY

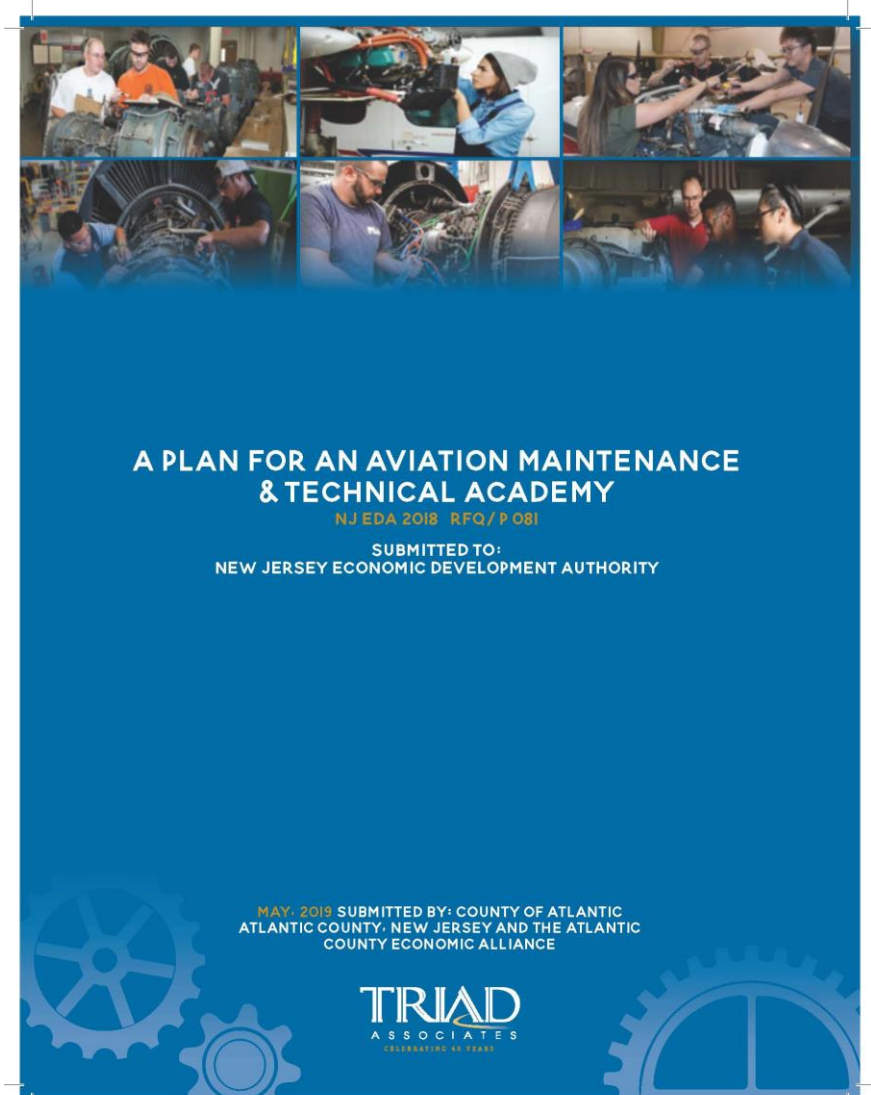


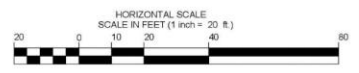
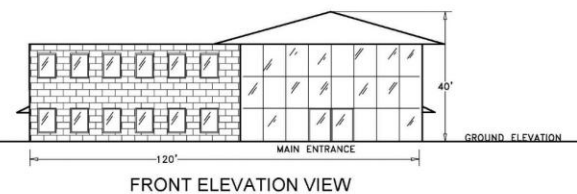
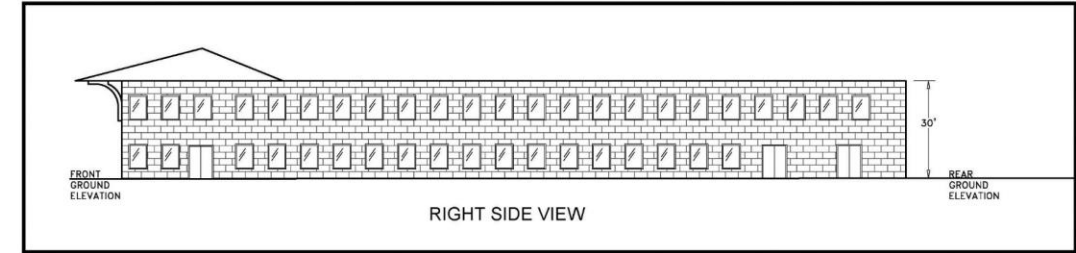
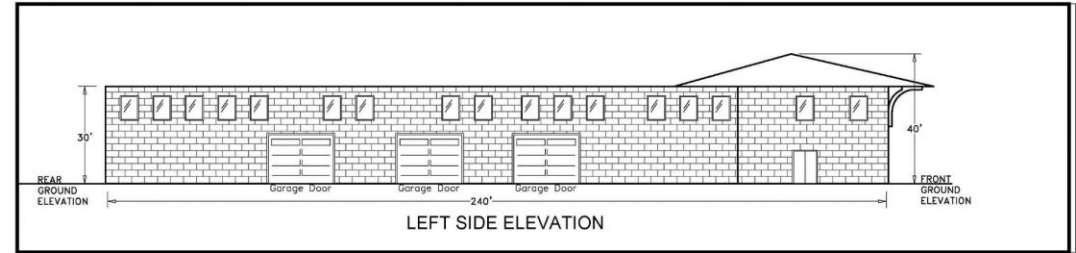
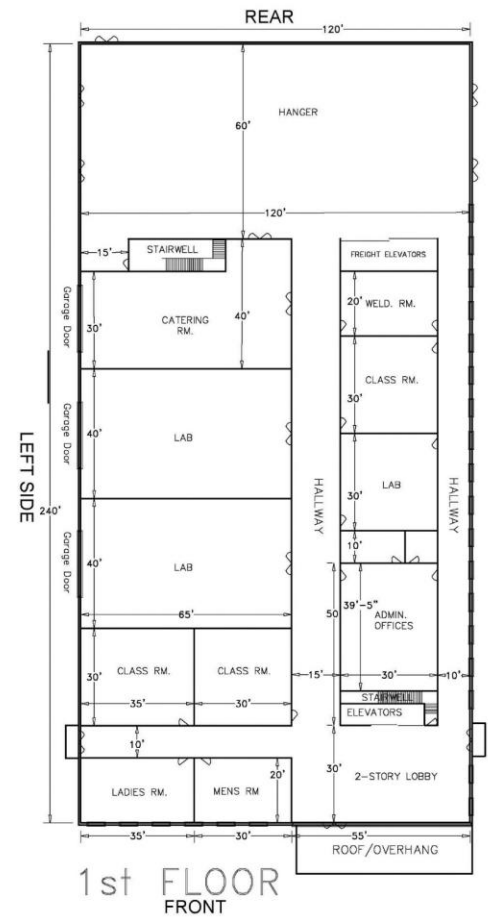
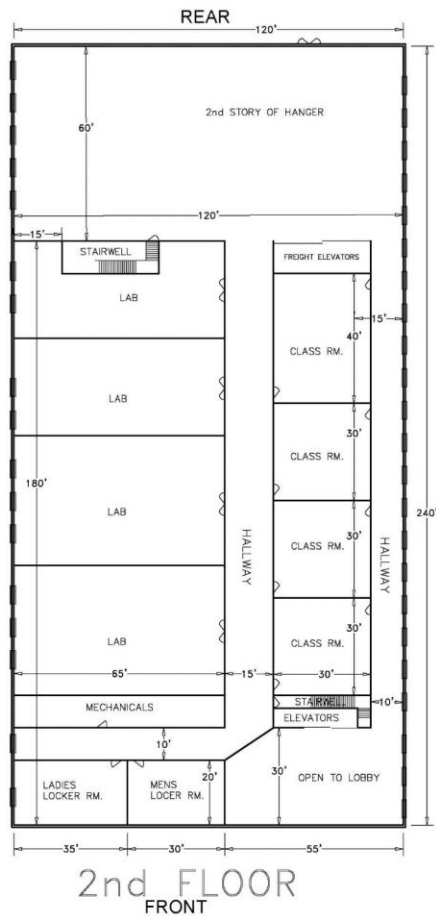
Atlantic City UAM Jitney Route



AVIATION MAINTENANCE & TECHNOLOGY ACADEMY

- \$13 million fully accredited 50,000 square foot academy
- Pursuing federal grant to help build academy with balance of funding from private and/or public sector
- Plans for Embry-Riddle Aeronautical University to operate in conjunction with Atlantic Cape Community College





BILL OF MATERIALS

ITEM NO.	UNIT	PLAN QUANTITY	IF & WHERE DIRECTED	AS BUILT QUANTITY	ITEM NO.	UNIT	PLAN QUANTITY	IF & WHERE DIRECTED	AS BUILT QUANTITY
10	CONSTRUCTION MATERIALS	--	--	--	32	CONSTRUCTION MATERIALS	--	--	--
11	CONSTRUCTION MATERIALS	--	--	--	33	CONSTRUCTION MATERIALS	--	--	--
12	CONSTRUCTION MATERIALS	--	--	--	34	CONSTRUCTION MATERIALS	--	--	--
13	CONSTRUCTION MATERIALS	--	--	--	35	CONSTRUCTION MATERIALS	--	--	--
14	CONSTRUCTION MATERIALS	--	--	--	36	CONSTRUCTION MATERIALS	--	--	--
15	CONSTRUCTION MATERIALS	--	--	--	37	CONSTRUCTION MATERIALS	--	--	--
16	CONSTRUCTION MATERIALS	--	--	--	38	CONSTRUCTION MATERIALS	--	--	--
17	CONSTRUCTION MATERIALS	--	--	--	39	CONSTRUCTION MATERIALS	--	--	--
18	CONSTRUCTION MATERIALS	--	--	--	40	CONSTRUCTION MATERIALS	--	--	--
19	CONSTRUCTION MATERIALS	--	--	--	41	CONSTRUCTION MATERIALS	--	--	--
20	CONSTRUCTION MATERIALS	--	--	--	42	CONSTRUCTION MATERIALS	--	--	--
21	CONSTRUCTION MATERIALS	--	--	--	43	CONSTRUCTION MATERIALS	--	--	--
22	CONSTRUCTION MATERIALS	--	--	--	44	CONSTRUCTION MATERIALS	--	--	--
23	CONSTRUCTION MATERIALS	--	--	--	45	CONSTRUCTION MATERIALS	--	--	--
24	CONSTRUCTION MATERIALS	--	--	--	46	CONSTRUCTION MATERIALS	--	--	--
25	CONSTRUCTION MATERIALS	--	--	--	47	CONSTRUCTION MATERIALS	--	--	--
26	CONSTRUCTION MATERIALS	--	--	--	48	CONSTRUCTION MATERIALS	--	--	--
27	CONSTRUCTION MATERIALS	--	--	--	49	CONSTRUCTION MATERIALS	--	--	--
28	CONSTRUCTION MATERIALS	--	--	--	50	CONSTRUCTION MATERIALS	--	--	--
29	CONSTRUCTION MATERIALS	--	--	--	51	CONSTRUCTION MATERIALS	--	--	--
30	CONSTRUCTION MATERIALS	--	--	--	52	CONSTRUCTION MATERIALS	--	--	--
31	CONSTRUCTION MATERIALS	--	--	--	53	CONSTRUCTION MATERIALS	--	--	--
32	CONSTRUCTION MATERIALS	--	--	--	54	CONSTRUCTION MATERIALS	--	--	--
					55	CONSTRUCTION MATERIALS	--	--	--

NOTE:
1. CONCEPTUAL DEPICTION ONLY
2. NORTH DIRECTION TO BE DETERMINED.



REVISIONS			
NO.	DATE	DESCRIPTION	BY



DIVISION OF ENGINEERING

MARK V. SHOURDS

COUNTY ENGINEER
PROFESSIONAL ENGINEER
NEW JERSEY LICENSE NUMBER
24GE 040264

COUNTY OF ATLANTIC
DEPARTMENT OF REGIONAL PLANNING
AND DEVELOPMENT

CONCEPTUAL DESIGN PLANS
ATLANTIC COUNTY AVIATION
MAINTENANCE & TECHNICAL
ACADEMY

CADD File Path: C:\Files\oom\A-Special

CADD File Name: AC Avia-Acad
Date: 4/2/19

ACEA PROMOTING BROAD REGIONAL ECONOMIC VISION FOR SOUTHERN NEW JERSEY

NEW JERSEY'S AVIATION RESEARCH TRIANGLE

- In addition to attracting aviation businesses to Atlantic County, the ACEA is working to develop a full southern New Jersey aviation “ecosystem.”
- This ecosystem will incorporate research and human assets at the following locations:
 - The Joint Base McGuire-Dix-Lakehurst
 - The emerging Unmanned Aircraft Systems activity in Cape May County
 - National Aviation Research and Technology Park on the grounds of Atlantic City International Airport.



IN THE WORKS: GLOBAL X PROJECT



- A Miami-based start-up charter airline announced a deal to bring two A320 aircraft to ACY.
- Project calls for construction of a \$5 million 25,000 square foot hangar for maintenance and repair.
- Project 70 new jobs: Pilots, flight attendants, and maintenance crews.



WHAT ELSE IS IN THE WORKS

- Planning and funding stage for second building.
- Working with Opportunity Zone investment group.
- Seeking federal support from CARES Act
- Engaged with several aerospace companies interested in space in second building.
- Lobbying State of New Jersey for \$30 million investment in Cargo Infrastructure at ACY using revenue from recent toll increases.
- Opening 300-acres of additional runway-side development opportunity by relocating bird sanctuary.
- Air jitney route and designating local air corridors for UAM and UAS testing.
- **Stimulating private sector investment!**
 - Airport hotel – breaking ground in 2020
 - Hangar/FBO project at ACY with local casino
 - Private sector investor for building #2



DEVELOPMENTS AROUND ATLANTIC COUNTY

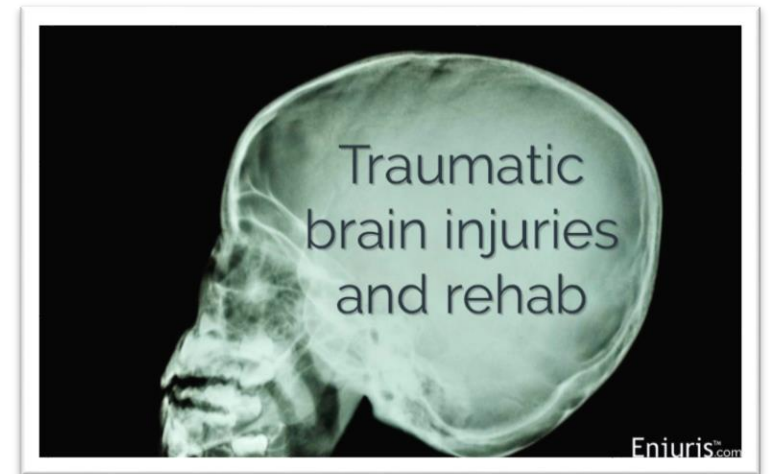
Medical Facilities Rising

AtlantiCare

- \$38.3 million, 68-thousand square-foot, three-story facility *Medical Arts Pavilion* at Ohio and Atlantic Avenues in Atlantic City.
- Expanding and creating programs to enhance access to care and address community health and wellness issues in Atlantic City.
- Land donated by CRDA: One-year extension of \$15 million fund reservation and a grant development agreement.
- Groundbreaking: End of Summer 2020.
- Opening: Summer 2022.

Traumatic Brain Injury (TBI) Facility

- Developer of the Tower Site in Egg Harbor City: SJ Neuro Rehab Agency
- Live-in TBI facility with full medical services, and nearby sites for third party medical and services offices.
- The Tower Site property designated in need of redevelopment by the municipality.





DEVELOPMENTS AROUND ATLANTIC COUNTY

Atlantic City Projects



The Showboat Hotel Proposed \$100 million water park

- “Aquatic-amusement experience” year-round facility
- Will offer slides, pools, and a lazy river in addition to locker rooms, lounges, eating and drinking venues, and retail

Gardner’s Basin

- Home to fishing fleet, several restaurants, novelty stores, and the Atlantic City Aquarium
- \$3.6 million for improvements and beautification including lighting, restrooms, parking, and Wi-Fi
- Work begins Fall 2020

Atlantic City Convention Center and Jim Whelan Boardwalk Hall

- Casino Reinvestment Development Authority (CRDA): \$15.2 million capital improvement budget for projects
- \$5 million switchgear replacement in West Hall in Boardwalk Hall
- \$1.8 million to restore portions of the facade on Boardwalk Hall to restore the masonry of the historic 90-year-old landmark to ensure structural integrity
- Work begins in 2020

Bulkheads in Lower Chelsea

- \$4 million in FEMA and Superstorm Sandy grant funding for city-owned bulkhead replacement project
- Includes sections along Sunset and Winchester Avenues and street ends between Jackson and North Albany Avenues.
- Tallahassee Avenue street-end bulkhead replacement recently completed

DEVELOPMENTS AROUND ATLANTIC COUNTY

2020 & 2021 Atlantic County Infrastructure Investment Plan

Bridge Maintenance and Repair – Critical due to extensive back bays, two major rivers, and scores of tributaries

- Currently: 8 multi-year bridge projects underway totaling \$79.5 million in construction outlays
- 2020: 7 additional bridge projects at a cost of \$13 million
- 2021: 3 projects at a cost of \$4.8 million



Road Projects

- 2020: 10 county road projects totaling \$8 million in construction expenditures & signalization projects at a cost of \$13 million
- 2021: 7 projects projected at a cost of \$4.5 million

Highway Construction Projects

- 2020: \$34 million in highway construction
- 2021: Projected \$12.5 million in projects



DEVELOPMENTS AROUND ATLANTIC COUNTY

Off-Shore Wind Comes to Atlantic City

Ørsted (US OffShore Wind)

- Wind farm 15 miles off Atlantic City
- Committed to spending \$1.6 billion to construct 1,100 megawatts in wind generation off Atlantic City
- Plans call for 96 12-megawatt turbines, currently the largest and newest wind turbine produced in the world
- Secondary sites – Beesley's Point Generating Station site and Higbee/Ontario substation in Atlantic City



Atlantic Shores LLC

- Joint venture between Shell New Energies and EDG Renewables
- Surveying 183,000 square mile section of ocean north of Atlantic City
- Leading bidder for New Jersey's second offshore wind farm

ATLANTIC SHORES
offshore wind

ANNUAL SNJDC
CONSTRUCTION FORECAST
ECONOMIC RECOVERY AHEAD

PRESENTED BY 
America's Most Convenient Bank®

Camden County: Working Together We Are Stronger

Introduced by Matt Kearney, French & Parrello Associates



Mike Hagarty
Director of Project Management
Camden County Improvement Authority





Making It Better, Together.

SNJDC ANNUAL CONSTRUCTION FORECAST

CAMDEN COUNTY

Working Together We are Stronger

Michael Hagarty

Director of Project Management
Camden County Improvement Authority

July 23, 2020



Working Together We Are Stronger

Response to COVID-19 Pandemic

Future County Facility Projects

Projects in Development Phase

Projects in Early Stages of Design

Municipality Partnerships



Making It Better, Together.



COVID-19 Response

Response to Challenges Created By COVID-19 Pandemic



- Partnered with local hospitals for testing sites
- Created Weekly Food Distribution for those in need
- Weekly live updates to keep people informed
- Education resources created and shared through communities
- Enforcing employee safety measures across all buildings
- Action planes created for future situations

County Facility Projects

■ New County Facility in Stratford



- Redevelopment of existing shopping center in former “Bradlees Dept. Store”
- Proposed subdivision of 120,000 SF building on 9.3 acres
- Features include new roof and façade; additional parking; sitework and landscaping
- Improved access and link to public transportation

■ Joint Services Facility

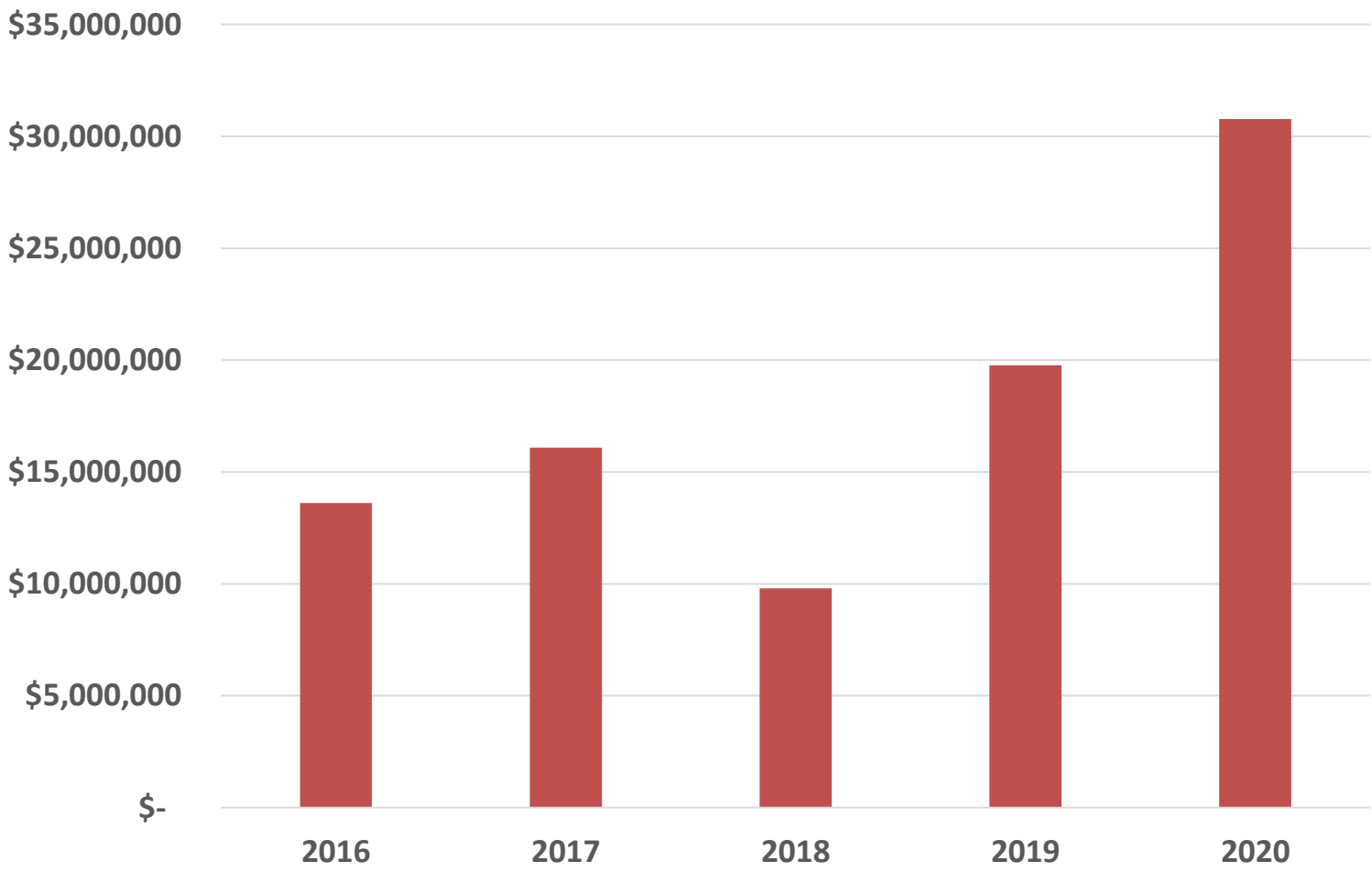


- Redevelopment of 22-acre project site on Mount Ephraim Ave in Camden
- Phase 1 provides new office complex for County, State and affiliated offices
- Future phases anticipate both additional office and commercial pad sites
- New complex promotes redevelopment of corridor



Projects in Development

CAMDEN'S TRANSPORTATION IMPROVEMENTS



Cooper Poynt Pedestrian Walkway



- The County is completing a concept study to connect the Camden Waterfront with the Cooper Poynt Park
- The bridge will be a cantilever swing bridge to allow DRVPC access under the Benjamin Franklin Bridge for maintenance
- The bridge will allow pedestrians, bicyclists and the waterfront tram to experience the views of the Delaware River and link to County wide trail



Cooper Poynt Pedestrian Walkway



Cooper Poynt Pedestrian Walkway



HADDON AVENUE (CR 561) EUCLID AVE. TO NEWTON AVE.



Upcoming Projects



- Replacement of Garfield Avenue over N. Branch of the Timber Creek, Clementon, NJ
- Elevation of Broadway CR 551, Jersey Ave to Bridge, Gloucester City
- Intersection Improvement, River Road and Federal Street, Camden City
- Haddon Avenue (CR 561), Berlin Township
- Cuthbert Boulevard and South Park Drive, Haddon Township
- Chew Road, Pestleton Road to Atlantic County Border, Waterford Township



Projects in Design

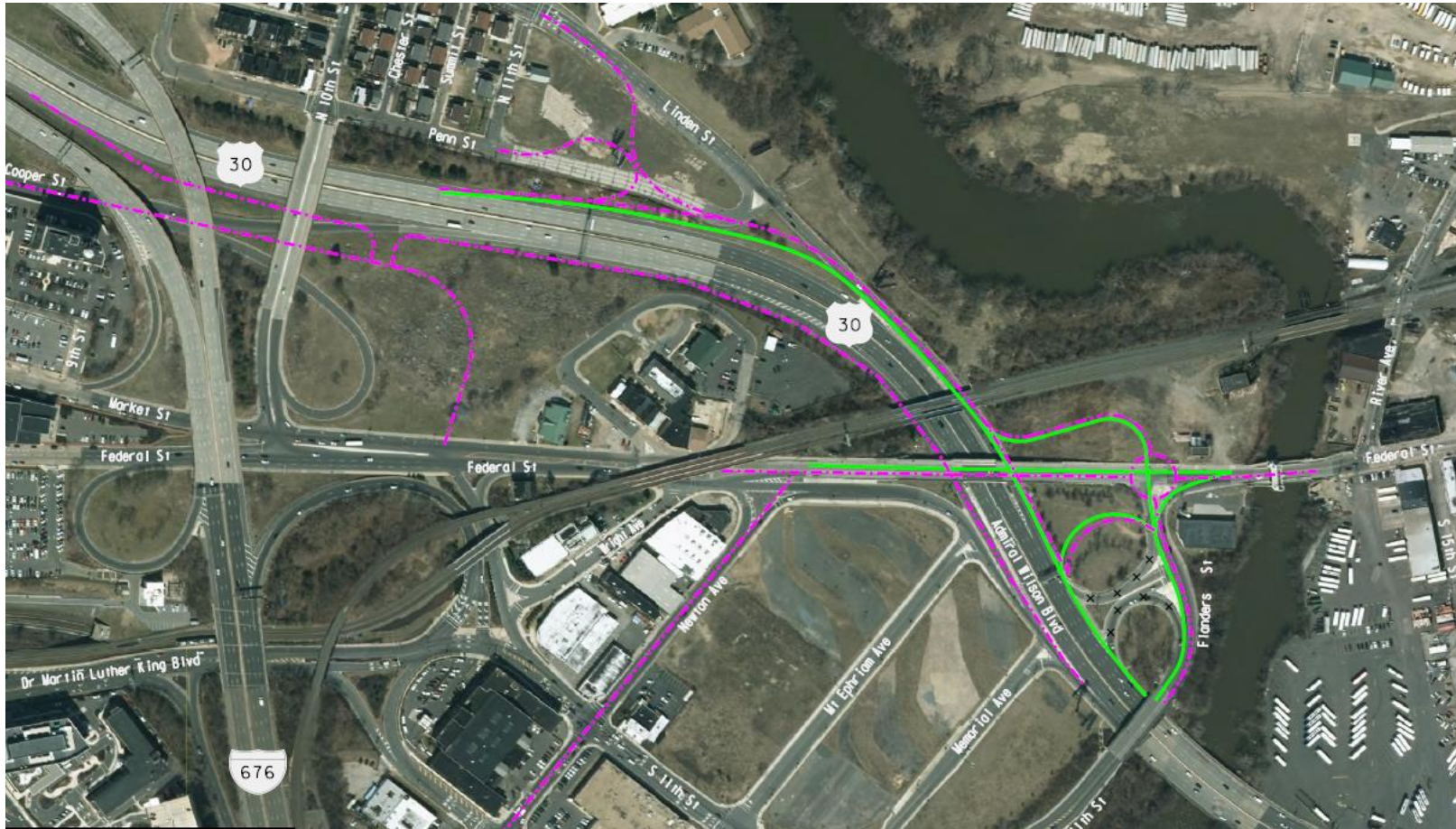
Market and Federal Street Traffic Operations



- Working to improve traffic flow and pedestrian safety on Market St. and Federal St. between Rt 30 and Delaware Ave due to the increase of jobs in Camden City.
- Improve traffic flow into the City and incorporate the Countywide trail from Camden City to Winslow into the improvements
- Received \$10M in NJDOT grant funding to design and construct improvements

ROUTE 30 FEEDER

IMPROVED ACCESS INTO CITY OF CAMDEN
BETWEEN ADMIRAL WILSON BLVD AND BEN FRANKLIN BRIDGE



Projects in Early Stages of Design



- Union Avenue, Park to Cove, Pennsauken Township
- 27th Street, Marlton Pike to Federal Street, Camden City
- Berlin-Cross Keys Road CR 689, New Brooklyn Erial to Camden County Technical School, Winslow and Gloucester
- Almonesson Road, Gloucester Township
- Haddon Avenue CR 561, Collingswood, Haddon Township and Haddonfield



Municipality Partnerships

Municipality Partnerships



- Barrington Fire Company and EMS Association Roof Replacement Project
- Camden City Demolition Program
- Collingswood Public Safety Building
- Collingswood Public Library
- Merchantville Community Building and Senior Center
- Waterford Township BOE School Capital Improvement Program
- Waterford Township Public Safety Building



Making It Better, Together.

CAMDEN COUNTY

Working Together We are Stronger



ANNUAL SNJDC CONSTRUCTION FORECAST ECONOMIC RECOVERY AHEAD

PRESENTED BY



America's Most Convenient Bank®

Thinking Differently About Cumberland's Future

Introduced by Bill Carter, Greenman – Pedersen, Inc.



Jerry Velazquez

President/CEO

Cumberland County Improvement Authority





Cumberland County Improvement Authority

THINKING DIFFERENTLY ABOUT THE FUTURE

CCIA: ROLES THAT IMPROVE OUR COMMUNITIES



Landfill Operations

Recycling
CNG/Electric Vehicles
Trash Collection
Fleet Maintenance



Shared Services

Fleet Maintenance
Technical Assistance
Redevelopment



Economic Development

Business Expansion
Business Recruitment
Technical Assistance
Opportunity Zones



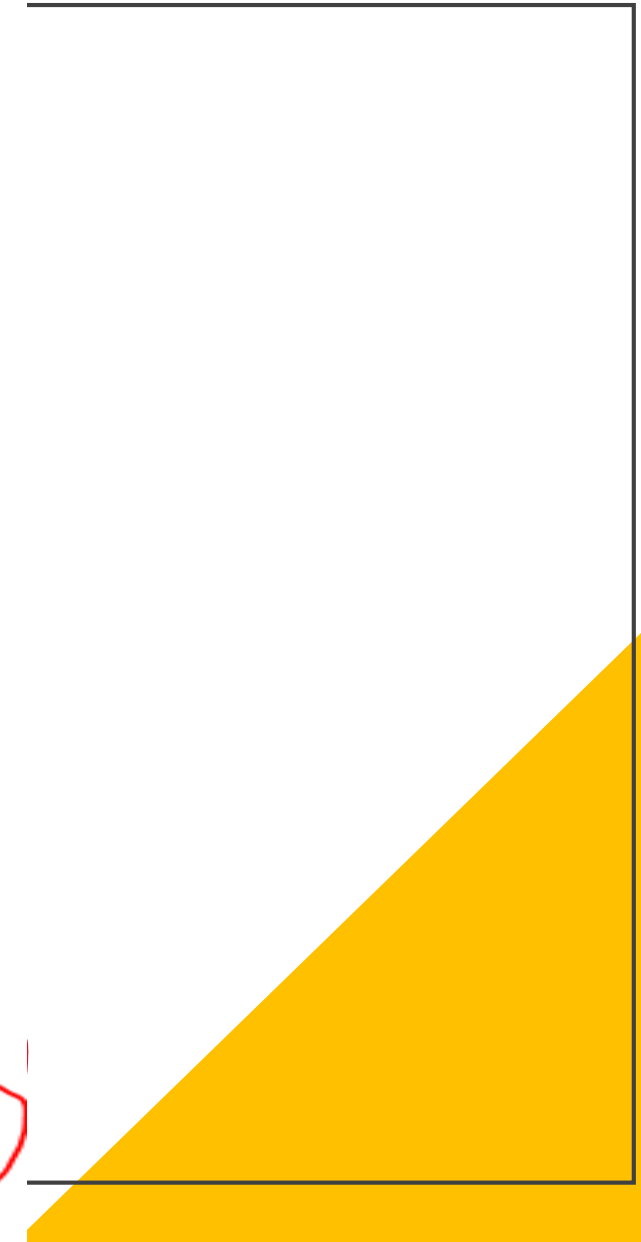
Public Facilities Projects

CCIA: Community Impact 2015-2020

- 27 public facility and renovation projects
- \$338 million project costs
- 30 shared service contracts
- 3,809 construction jobs
- 580 new, full time jobs
- \$702,764,337 direct/indirect economic impact



PROJECT	CCIA PROJECT COST	ESTIMATE OF CONSTRUCTION RELATED AND FULL-TIME JOBS	TOTAL IMPACT
County Technical Education Center (CCTEC)	\$68,604,770	785	\$128,258,670
Rowan College of South Jersey Arts & Innovation Center	\$6,950,000	70	\$11,601,000
Center for Workforce/Economic Development	\$7,596,000	75	\$12,394,000
275 Delsea Drive Services Center	\$2,444,199	44	\$9,909,243
East Point Lighthouse Restoration	\$850,000	8	\$1,306,251
New Jersey Motor Vehicle Center	\$1,442,283	14	\$2,163,425
Solid Waste Complex Landfill Cell Replacement	\$19,118,111	177	\$28,677,167
Solid Waste Complex Landfill Gas Facility	\$515,277	5	\$772,916
Solid Waste Complex Treatment Plant	\$2,246,548	22	\$9,319,822
Food Specialization Center	\$10,500,000	113	\$16,860,000
CCTEC Health/Sciences Building	\$23,000,000	221	\$35,910,432
CCIA Administration Building	\$5,500,000	100	\$15,750,000
57-71 Park Avenue, Vineland	\$21,669,118	193	\$32,503,667
Vineland Police Station	\$22,575,863	206	\$33,863,795
County Jail and Holding Facility	\$60,000,000	534	\$90,000,000
Rowan College of South Jersey STEM Facility	\$2,500,000	22	\$3,750,000
Downtown Bridgeton Project(s)	\$11,201,713	100	\$16,802,570
Downtown Millville Project(s)	\$6,639,246	59	\$9,958,869
Solid Waste Complex Landfill Upgrades	\$6,700,000	61	\$10,050,000
Solid Waste Complex CNG Station	\$2,800,000	26	\$4,200,000
Solid Waste Complex Micro Grid Project	\$9,000,000	80	\$13,500,000
Data Center Sale/Solar Project	\$63,000,000	649	\$102,937,500
Lincoln Avenue Redevelopment	\$19,230,000	450	\$45,345,000
Solid Waste Complex Methane Gas Expansion	\$1,500,000	13	\$2,250,000
Cumberland County Capital Projects	\$1,720,000	15	\$2,580,000
Cape May Shopping Center Project	\$19,000,000	169	\$28,500,000
Southeast Gateway Housing Project	\$20,000,000	178	\$30,000,000
Estimate of Shared Services Savings	---	---	\$3,600,000
TOTALS	\$337,953,128	4,389	\$702,764,337



SHARED SERVICE GAINS

REALIZED COUNTY SAVINGS/CCIA CONTRIBUTION	County
➤ Economic Development: Administration, Marketing, Public Relations/Conferences, and General Expense	\$ 641,403
➤ Cumberland County College	950,984
➤ County Contribution	605,114
➤ Rental Savings/Lease Properties	183,426
➤ Fleet Maintenance	335,675
➤ Deerfield Host Community Benefit	585,000
➤ Health Department Contribution	136,500
➤ Trash removal/Derelict Building/Impound Lot Rental *	96,600
➤ 78-80 Atlantic Street Parking Lot	24,000
➤ Construction Management – 1.5% x Construction Costs	
TOTAL COUNTY BENEFIT	\$3,558,702

ADDITIONAL SHARED BENEFITS TO ALL MUNICIPAL PARTICIPANTS:

- ❖ Real Estate Shared – Marketing County properties for revenue production or sale
- ❖ Capital Project Funding
- ❖ Equipment Financing Program
- ❖ Fleet Maintenance
- ❖ Car & Truck Wash
- ❖ Fuel System & Vehicle Diagnostic Devices

CCIA: Covid-19 Business Resources

- One-Stop Information Center
- 40+ Member Business Resources Weekly Meeting
- Direct Technical Assistance to Cumberland Businesses
- Cumberland Reopening Plan
- Best Practices by Industry
- Projected Impact Report





Current Projects

OPPORTUNITY ZONES: *PRIVATE INVESTMENT*

MILLVILLE ARTS DISTRICT

Targeted Industries:

- *Arts and Tourism*
- *Retail*
- *Residential*
- *Commercial*



VINELAND CENTRAL BUSINESS DISTRICT

Targeted Industries:

- *Entertainment*
- *Retail*
- *Residential*
- *Commercial*



BRIDGETON A FOOD TECHNOLOGY HUB

Targeted Industries:

- *Food Specialization*
- *Industrial*
- *Residential*
- *Commercial*





“We cannot solve
our problems with
the same thinking
we used when we
created them”.

-Albert Einstein

Ten Year Strategic Plan 2020-2030

Thinking Differently about
our Future



rendering subject to change during development.

Rowan College
MIDDLE JERSEY



Thinking Differently
About our Future



CCIA: Investing in Cumberland's future



ANNUAL SNJDC CONSTRUCTION FORECAST ECONOMIC RECOVERY AHEAD

PRESENTED BY



America's Most Convenient Bank®

NJ Wind Port Transforming Our State

Introduced by Todd Farally, Sheet Metal Workers' Union Local 19



Brian Sabina

*Sr. Vice President, Office of Economic Transformation
New Jersey Economic Development Authority*





NEW JERSEY WIND PORT

LOWER ALLOWAYS CREEK

**Offshore wind is a once-in-a
generation opportunity**

**\$100 billion in investment over
the next 15 years**



**NEW JERSEY IS:
AN EMERGING HUB
FOR U.S. OFFSHORE
WIND**



**STRONG POLITICAL COMMITMENT
TO THE WIND INDUSTRY**



**7,500 MW OF PROJECTS OVER THE
NEXT 15 YEARS**



**A VALUE AND SUPPLY CHAIN
GROWTH STRATEGY**



**PORT INVESTMENTS TO
SUPPORT OFFSHORE WIND**

**NEW JERSEY IS:
AT THE HEART OF
THE EAST COAST
WIND BELT**



**ACCESS TO ALL
OF THE US
EAST COAST
LEASE AREAS**



**REGIONAL
CONNECTIVITY
IN THE
NORTHEAST AND
MID-ATLANTIC**



**EASY ACCESS
TO THE REST
OF THE GLOBE**

NEW JERSEY HAS: TALENT FOR THE ENTIRE WIND ECOSYSTEM

LARGE AND ACCESSIBLE
TALENT POOL



4th

highest share of bachelor
degree+ holders in the US

A WORKFORCE READY
FOR OFFSHORE WIND



90,000+

workers with offshore wind-
adjacent skills

PIPELINE OF TOP TALENT



150+

higher education institutions
in the region

**NEW JERSEY IS
LAUNCHING:**

The WIND Institute



**ACT AS A CENTRALIZED
HUB FOR OFFSHORE
WIND WORKFORCE
DEVELOPMENT**



**CHAMPION RESEARCH
AND INNOVATION THAT
UNLOCKS MARKET
POTENTIAL**

First purpose-built offshore wind port in the U.S.

Lower Alloways Creek,
Salem County



Expected economic impact:

- **\$300-400 million** green infrastructure investment in South Jersey
- Up to **1,500 permanent** manufacturing, assembly, and operations jobs
- **Hundreds of construction jobs** targeted to start in 2021
- **\$500 million** in new annual economic activity

**The New Jersey
Wind Port at
Lower Alloways
Creek will be an
integral part of
New Jersey's
growing
offshore wind
port network**



Why Lower Alloways Creek?



- OPEN ACCESS TO THE ATLANTIC
- AMPLE AVAILABLE SPACE
- NO BRIDGE RESTRICTIONS
- STRONG TECHNICAL AND TRADES WORKFORCE
- 50% OF US LEASE AREAS WITHIN 1-DAY'S STEAM

Two phases of development

- 
- PHASE 1 (2023): MARSHALLING AND MANUFACTURING
 - PHASE 2 (2024-2026): EXPANDED MARSHALLING AND MANUFACTURING
 - DREDGING

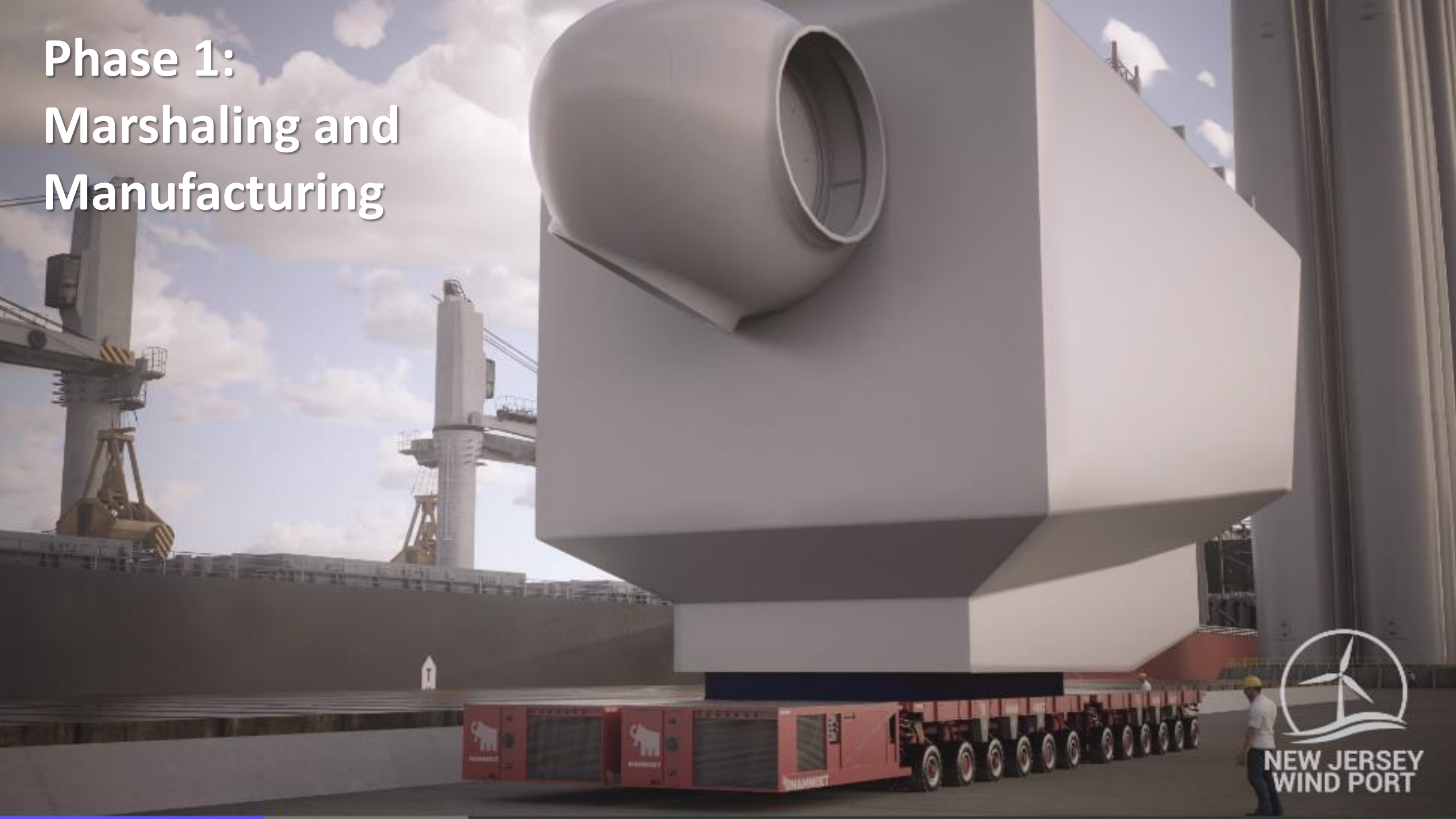
Phase 1: Construction 2021 | Operations: 2023



 PHASE 1 (2023): MARSHALLING AND MANUFACTURING

 DREDGING

Phase 1: Marshaling and Manufacturing



**NEW JERSEY
WIND PORT**



**Phase 1:
Marshaling and
Manufacturing**



**NEW JERSEY
WIND PORT**

Phase 2: Construction 2023 | Operations: 2024-26

● PHASE 2 (2024-2026): EXPANDED MARSHALLING AND MANUFACTURING



Phase 2: Expanded Marshaling and Manufacturing

NJEDA's commitments:

- Constructed using **union labor**
- **New standard** for minority and women-owned business inclusion
- **Environmentally responsible** development
- **Enable competition** that lowers energy costs



NEW JERSEY WIND PORT

LOWER ALLOWAYS CREEK

www.nj.gov/windport

ANNUAL SNJDC CONSTRUCTION FORECAST ECONOMIC RECOVERY AHEAD

PRESENTED BY



America's Most Convenient Bank®

Audience Q&A

Please use the Q&A feature to submit your questions



ANNUAL SNJDC
CONSTRUCTION FORECAST
ECONOMIC RECOVERY AHEAD

PRESENTED BY



America's Most Convenient Bank®

A Special Thank You to our Sponsors!

Presenting Sponsor



America's Most Convenient Bank®

Supporting Sponsors



ANNUAL SNJDC CONSTRUCTION FORECAST ECONOMIC RECOVERY AHEAD

PRESENTED BY



America's Most Convenient Bank®

Thank You to our Exhibitor Sponsors!



Cisco WebEx provided by

